



APPALACHIAN TRAIL
CONSERVANCY®

A.T. Landscape Partnership



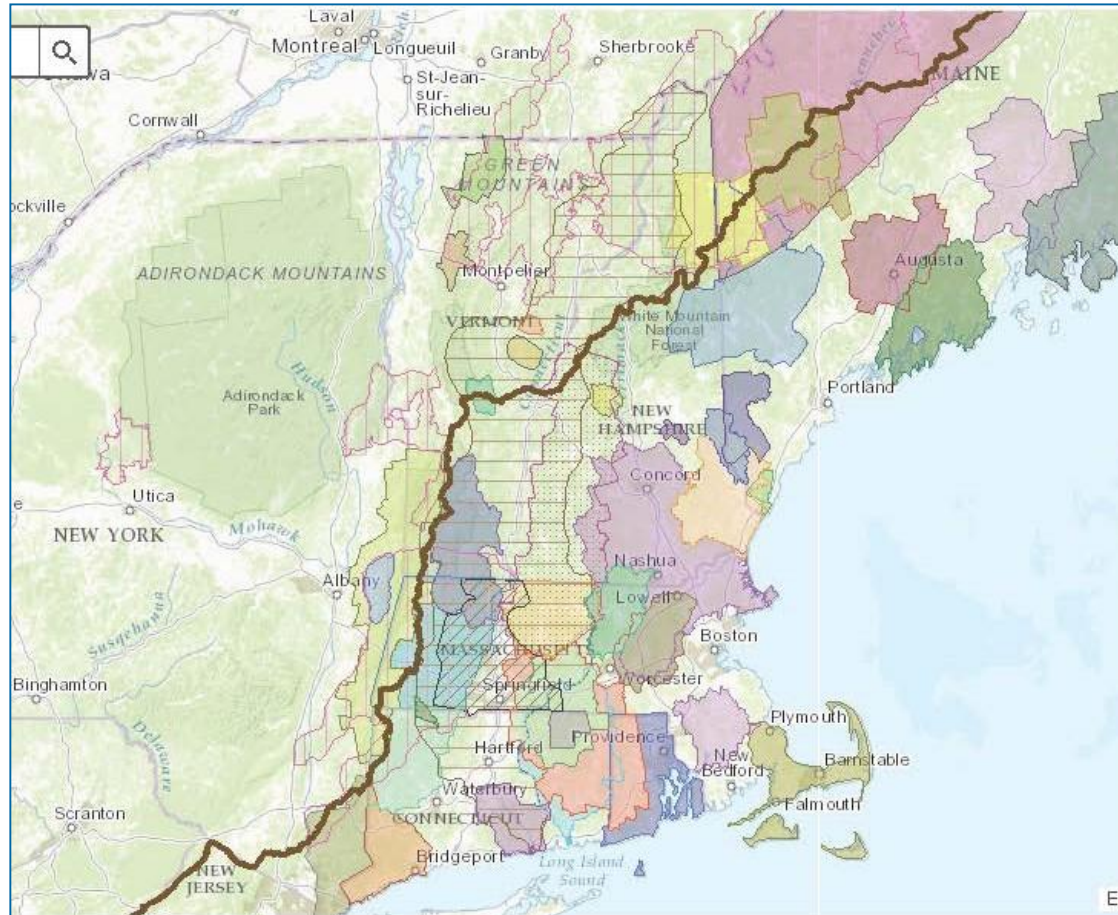


Video: <https://www.youtube.com/watch?v=xk-NapHTWrc>



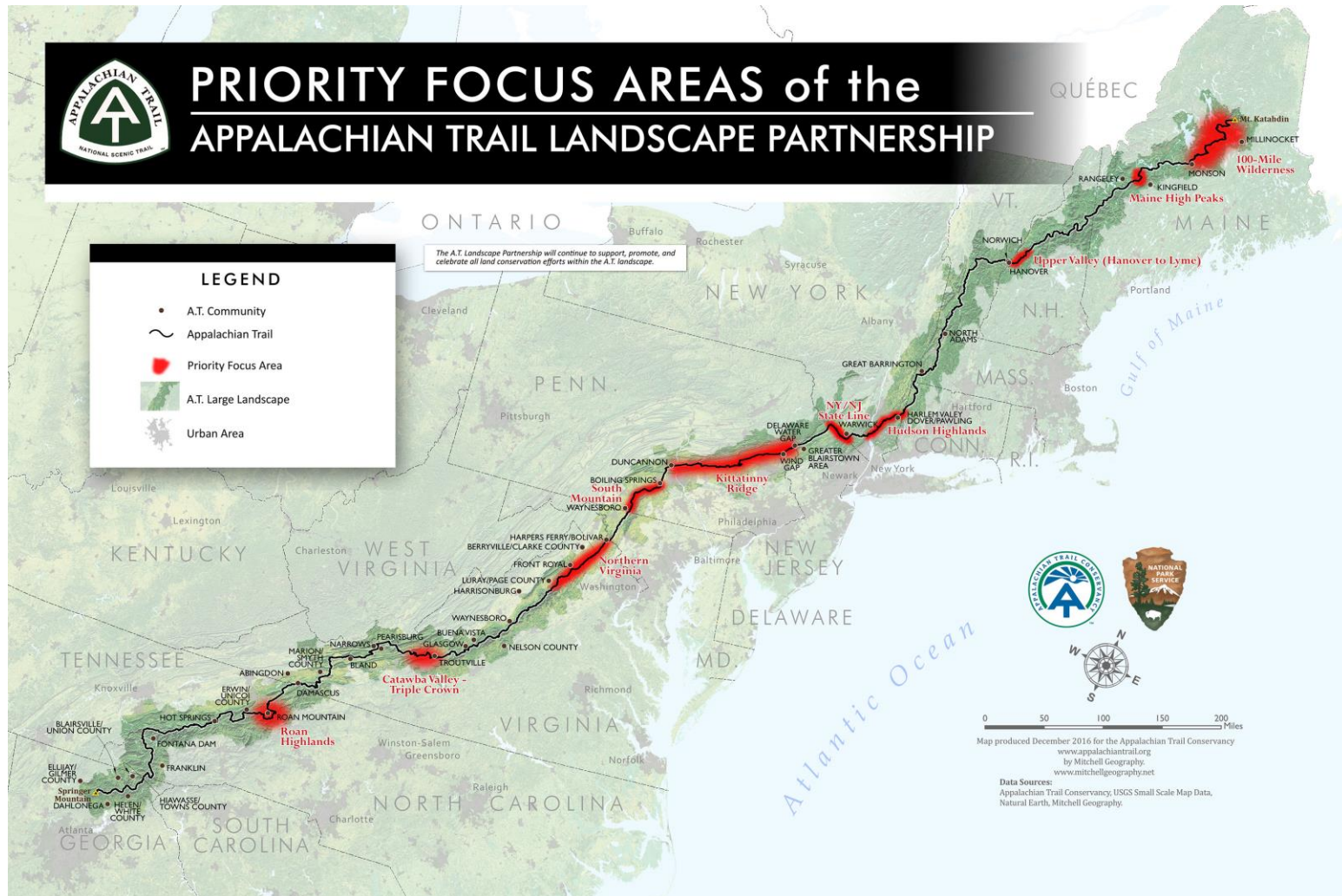


RCPs Along the Appalachian Trail





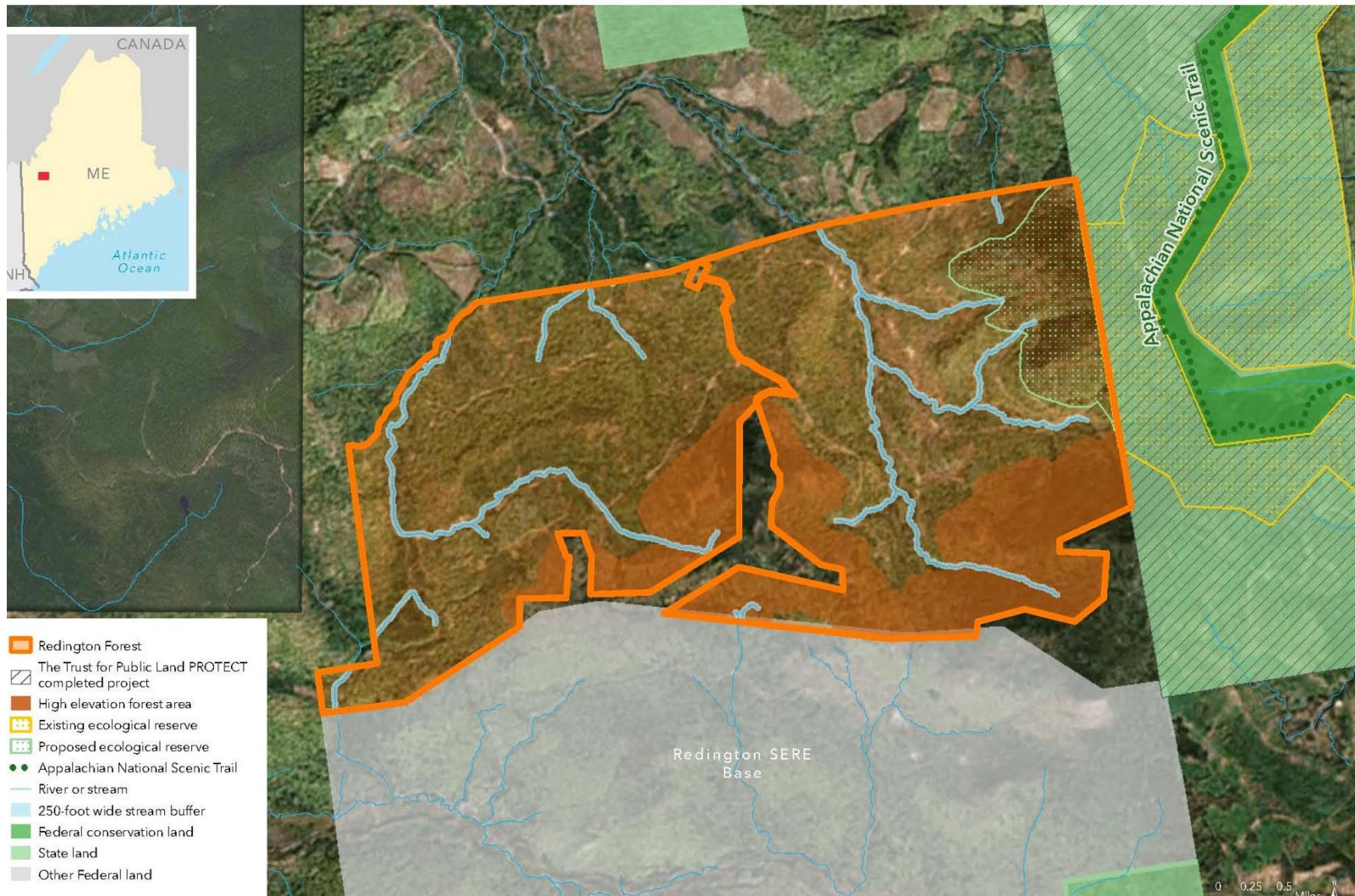
Priority Focus Areas





Redington Forest



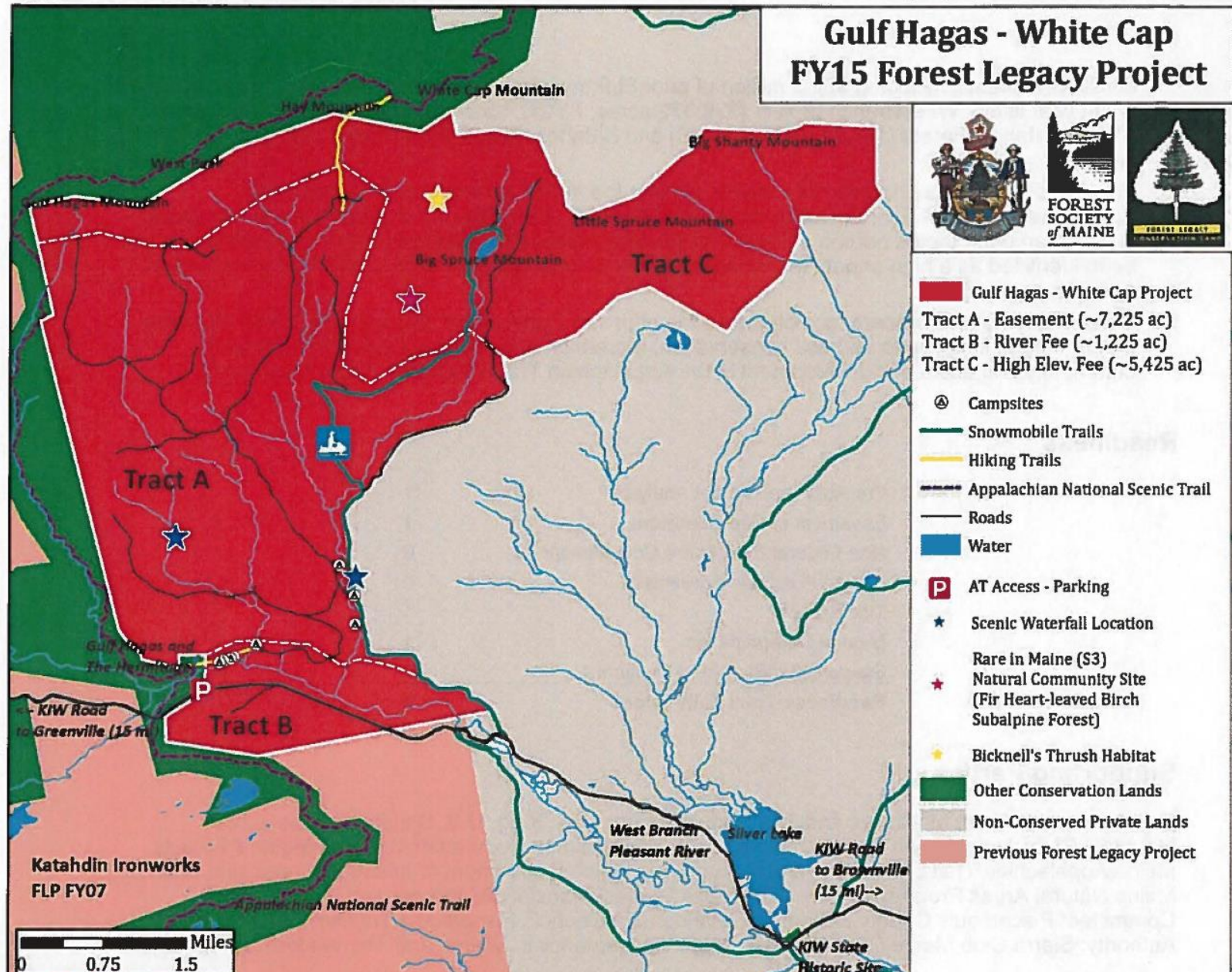






White Cap Mountain











Hudson Farm, Hanover, NH

Local Leadership



- Hanover had recently become an A.T. Community
- Municipal Open Space Plan highlights protection of the A.T.
- Town manager was key community leader
- Hanover Conservancy had local credibility & wanted to be part of the project

A.T. Leadership



- Hanover wrote to NPS inviting new federal land acquisition
- NPS could sell project within agency as meeting municipal objectives and A.T. objectives
- ATC was willing to take on more management burdens including an open area
- A.T. policies can be flashpoints - mountain biking (sigh)

Public Funding Strategy



- NPS sought FY 15 LWCF funding.
- ATC helped with congressional outreach
- Local support is key to congressional support
- Senator Ayotte visited the property as an example of LWCF success
- Result = \$2.2 million in FY 15
- Final appraisal was \$1,840,000

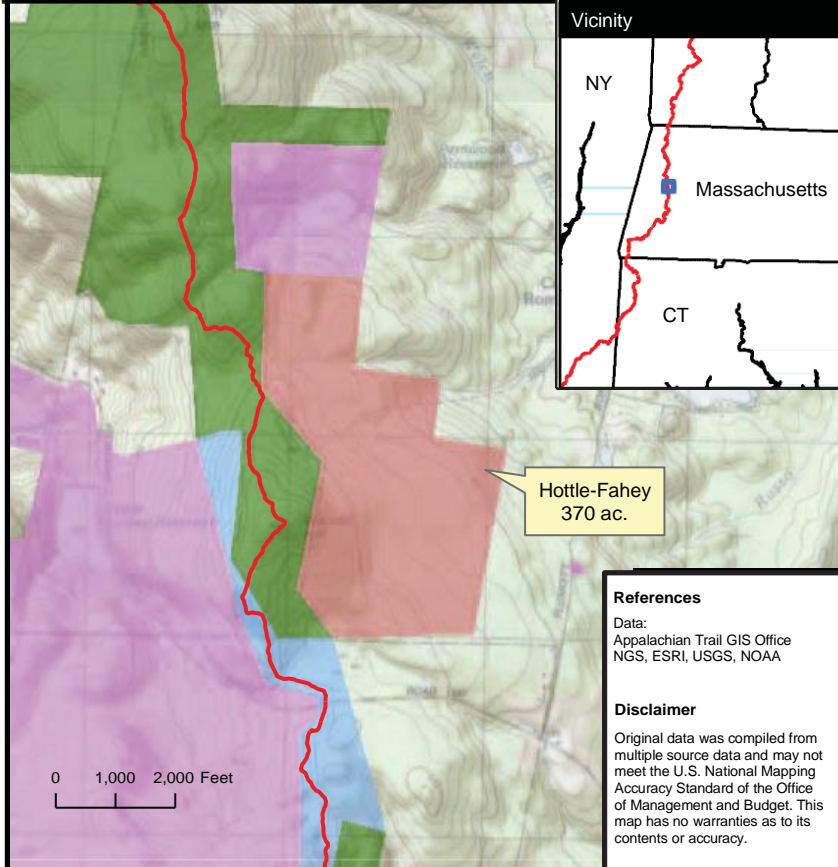
Hottle-Fahey Forest





Hottle-Fahey Forest

Berkshire County, Massachusetts
Appalachian National Scenic Trail



Legend

- Appalachian Trail (NST)
- Hottle-Fahey Tract
- NPS-APPA Land
- State Land
- Town Land

HOTTLE-FAHEY (MA)

Appalachian National Scenic Trail

FY'18 National Trails System
LWCF Collaborative Funding Proposal

This map depicts the approximate location of proposed acquisition
for the Appalachian National Scenic Trail



National Park
Service

More detailed cadastral maps can be requested from
NPS APPA
(Appalachian National Scenic Trail Park Office)

References

Data:
Appalachian Trail GIS Office
NGS, ESRI, USGS, NOAA

Disclaimer

Original data was compiled from
multiple source data and may not
meet the U.S. National Mapping
Accuracy Standard of the Office
of Management and Budget. This
map has no warranties as to its
contents or accuracy.



Clear, cold water streams and pristine wildlife habitat are abundant in the Hottle-Fahey Forest. Photo courtesy of the Trust for Public Land.

**LWCF FY 2018 Request: \$682,000
370 Acres**

Acquiring Agency: NPS

- Enables 1.5 miles of trail re-routing
- Includes a popular scenic vista from the Appalachian NST at Warner Hill
- Threatened by industrial wind development and liquidation style forestry
- Forms the westerly edge of Hinsdale Flats, a State of Massachusetts-designated “Area of Critical Environmental Concern,” for intact forest resources, connected habitat, rare plants, cold water fish streams and drinking water sources, and important forest soils
- Contains headwaters of the Housatonic River watershed
- Property is 6 miles west of Pittsfield--the largest city in Berkshire County, MA



The Trust for Public Land, the Appalachian Trail Conservancy, and the Bafflin Foundation to contribute ~\$90,000 combined towards

Connecting Our Values to GIS Data

Viewsheds

- Viewshed analysis from selected point locations.

Forestlands and Farms

- NLCD Land Cover data sets
- Simulated development layers

Natural Resources

- Nature's Network Conservation Design
- TNC Resiliency and Connectivity data

Recreation and Public Access

- Recreational data from the Appalachian Trail Conservancy
- Data on side trails

Community Connections and Human Health

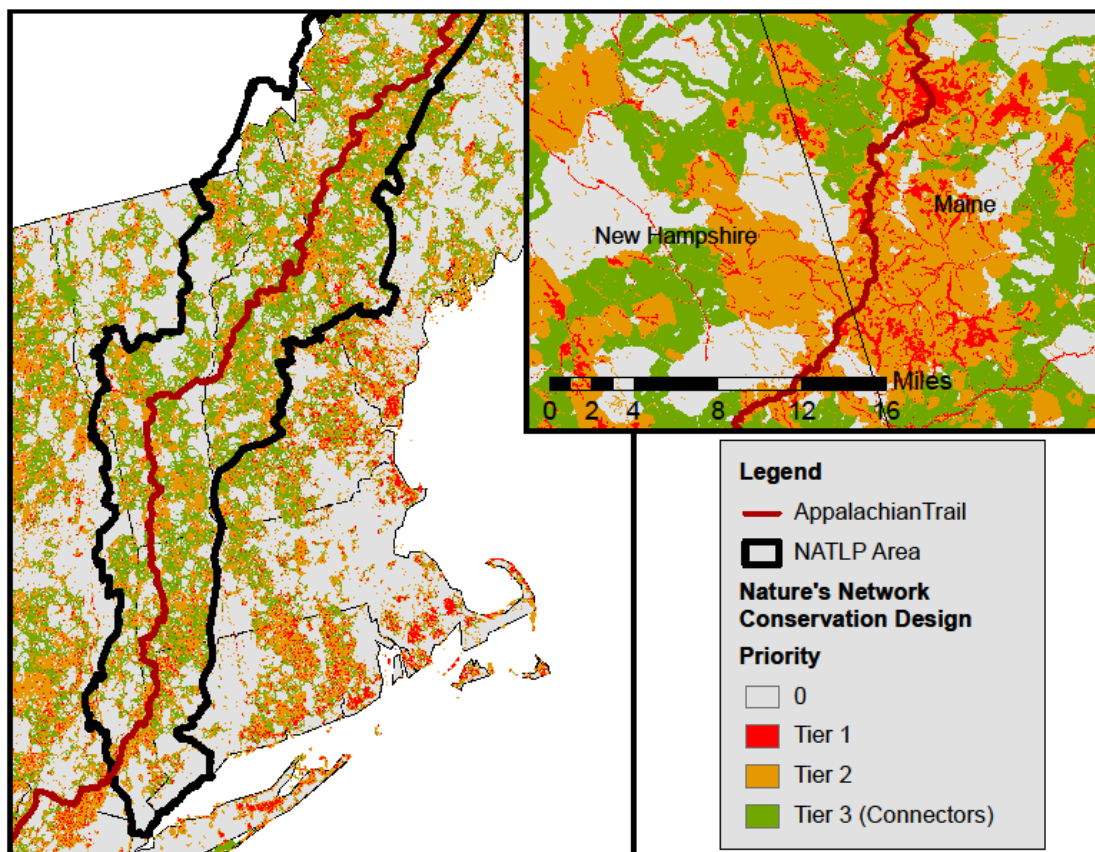
- Distance to populations
- Public health data

Historic and Cultural Sites

- NPS National Register of Historic Places

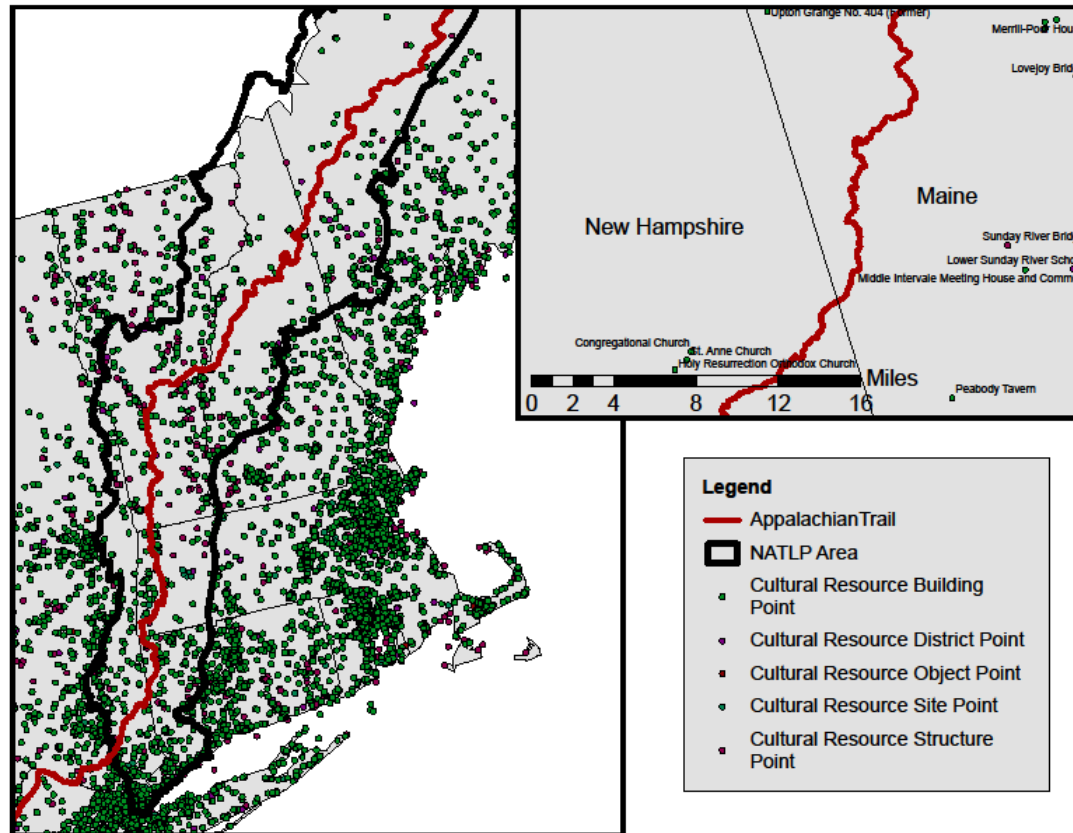
Value: Natural Resources

GIS Data: Nature's Network Conservation Design



Value: Historic and Cultural Sites

GIS Data: NPS National Register of Historic Places



Value: Recreation and Public Access

GIS Data: Recreational data from the Appalachian Trail Conservancy

